



Digital electronic super-automatic wheel balancer with touch screen video display

Digital electronic super-automatic wheel-balancer with touch screen video display. Equipped with new concept wheel guard, air operated wheel clamping system, automatic measurement of diameter and distance without the need to use the measuring gauge. Equipped with sonar detectors for automatic measurements of wheel width (LA) and radial run out (ROM), LASER LINE for exact positioning of clip weights and LASER POINTER for exact positioning of adhesive weights. LED light beam to illuminate the inside of the rim to enable positioning of adhesive weight in 6:00 o'clock position. Automatic positioning of balancing weight, self-diagnosis and balancing without need of check-spin. Equipped with special programs for balancing weight minimization, statistics of the used weights, residual dynamic imbalance notice, correct positioning of each balanced tyre on vehicle.

Main Features



OptiWeight System

The OptiWeight (OW) System, which reduces the number of counterweights needed, by minimising static imbalance.



19" Touch Screen TFT High Definition Monitor

19" TFT flat-screen, high-res colour monitor with Touch Screen control.



Air Lock

Pneumatically locks the wheel onto the shaft of the wheel balancer. Besides speeding up the operation, it also centres the wheel with extreme precision, because the gas springs actuated by the pneumatic system always tighten the wheel...



Fast & Easy Split

Fast & Easy Split (FES) divides the counterweight needed to correct imbalance, based on the installation position behind the spokes of the aluminium rim. Requires a very simple, very quick operation without the need to enter...



Automatic Measurement of Wheel Width

Automatic measurement by a SONAR detection system of the width of the wheel to be balanced (LA). Provides an immediate, precise reading without the need for the operator to do anything.



Lock

An electromagnetic brake automatically locks the wheel and the gauge into the proper position for installing the weight.



No Wheel Needed

"No Wheel Needed" (NWN) system for calibrating gauges. The gauge shaft or Sonar detector is positioned at a given distance from the fixed points established for the procedure, without the need for using sample wheels.



Radial run Out Measurement

Automatic measurement of radial eccentricity (ROM) by a SONAR detection system. Provides an immediate, precise reading without the need for the operator to do anything.



Tire Set function

Tyre Set (TS) system suggests the best position for the wheels on the vehicle (front, rear, right and left) based on the level of imbalance reduction achieved on each wheel.



Car

Suitable for car wheels



No Caliber Need

NCN System is an innovative laser system, which in combination with LA Sonar automatically detects all wheel measurements needed for balancing, without the need to use the measuring gauge.



No Check-Spin

No Check-Spin (NCS) system to avoid check-spin after positioning of balancing weights, thanks to the high accuracy of the measuring system.



LED LIGHT

LED light beam to illuminate the inside of the rim and work safely.



USB

Suitable for USB connection to load customized graphic and software updates, as well as to download statistical data on the consumption of wheel weights.



LASER LINE

LASER LINE for exact positioning of clip weights.



PRINTER

Can be connected to color printer for balancing certificate printout.



LASER POINT

LASER POINTER for exact positioning of adhesive weight.



AWP

Automatic positioning of balancing weight by laser pointer and electric brake



Description

Digital electronic super-automatic wheel-balancer with touch screen video display. Equipped with new concept wheel guard, air operated wheel clamping system, automatic measurement of diameter and distance without the need to use the measuring gauge. Equipped with sonar detectors for automatic measurements of wheel width (LA) and radial run out (ROM), LASER LINE for exact positioning of clip weights and LASER POINTER for exact positioning of adhesive weights. LED light beam to illuminate the inside of the rim to enable positioning of adhesive weight in 6:00 o'clock position. Automatic positioning of balancing weight, self-diagnosis and balancing without need of check-spin. Equipped with special programs for balancing weight minimization, statistics of the used weights, residual dynamic imbalance notice, correct positioning of each balanced tyre on vehicle.

Functions

- Touch screen HD color video monitor 19" TFT;
- Automatic measuring of wheel diameter and distance by laser (acquisition without caliber);
- Automatic measuring of wheel width through SONAR LA;
- Automatic measuring of radial run out by SONAR (ROM);
- Pneumatic wheel locking;
- Automatic START and STOP;
- Static and dynamic balancing;
- Huge combination of ALU programs Special ALU-S program;
- NWN system;
- FES function;
- OPTIMATCH function;
- Self-diagnosis and balancing by NCS System without need of check-spin;
- LED light to illuminate working area;

Standard Features

| | |
|-----------------------|-------------------------|
| Max. wheel weight | 75 Kg |
| Max. tyre diameter | 1100 mm |
| Rim diameter | 10"-30" / 255-765 mm |
| Rim width | 1,5"-20" / 40-510 mm |
| Power supply | 230V 1ph (50/60 Hz) |
| Cycle time | 4,7s (5 3/4"x14") 15 Kg |
| Rotating speed | < 100 rpm |
| Balancing precision | ÷ 0,5 g |
| Operating pressure | 8-10 bar (115-145 PSI) |
| Net weight with guard | 107 |
| Dimensions (WxDxH) | 1430x1350x1360÷1805 mm |



S 855 EVO Plus

Standard Accessories



LA (9336362)

LA sonar for automatic measuring of wheel width.



ROM (9336363)

ROM Sonar for automatic measuring of radial RUN
OUT

Standard accessories

Standard accessories

**UNILUG (9342855)**

Wheel clamping adaptor for wheels without central hole or with special flanging

**9342856**

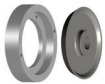
Kit of 5 quick-lock centering stud bolts for Unilug

**9342860**

Set of 5 extra-long spherical nuts for Unilug

**9342861**

Clamping cone with spacer for SUV and 4WD wheels; central hole diam. 122-174 mm

**9342862**

Clamping cone with spacer for clamping wheels of LCVs and vans; central hole diam. 198-225 mm

**9342863**

Special cone for clamping wheels from outside; central hole diam. 100-118 mm

**9342867**

Spacer kit for clamping SUV or 4WD all terrain wheels, to prevent the wheel from touching wheelbalancer baseframe.

**QUICKPLATE (9342864)**

Wheel clamping adaptor with flange and 4 centering stud bolts, for wheels with max. 4 lug holes

**QUICKPLATE (9342865)**

Wheel clamping adaptor with flange and 5 centering stud bolts, for wheels with max. 5 lug holes

**QUICKPLATE (9342866)**

Wheel clamping adaptor with flange and 6 centering stud bolts, for wheels with max. 6 lug holes

**RL (9314901)**

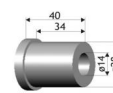
RL protective sleeve for alloy rims.

**WBL81 (9437137)**

WBL81 wheel lift, for wheel easy positioning and centering on the shaft, without any effort for the operator.

**PROBIKE EKO KIT (9341191)**

Clamping adaptor for motorcycle wheels. Complete with 14 mm diam. shaft. and Quick Fix quick clamping device

**9342850**

Set of 28 mm centering rings for Probike Eco Kit with 14 mm diam. shaft

**9343251**

Printer with connection cable

**9342851**

19 mm diam. shaft with complete set of centering rings, adaptors and Quick Fix quick clamping device, for ProBike Eco

**PROFI KIT (9342852)**

Set of special adaptors for 19 mm diam. shaft on ProBike Eco

**9342853**

10 mm diam. shaft with adaptors, for ProBike Eco



Scan QR code to go to product web page



Giuliano Automotive Equipment (Suzhou) CO.,Ltd

NO 8 Jinsheng Road

SIP Suzhou (Jiangsu)

P.R.China

+86 0512 69368611

+86 0512 69367919

<https://www.giuliano.cn>

