



Racing Super-Automatic Tilt Back Tyre Fitting Machine

Racing super-automatic tilt back tyre fitting machine for tyres with rim from 10" to 28" (max. tyre diameter 1100 mm./43", max. tyre width 415mm./16"). Patented PO System will grant no BB shovel stuck into the rim.



Resistance Under Stress Coefficient (RUSC) gives some idea of how robust a tyre changer can be, in terms of strength and power against all different kinds of stress involved in mounting/demounting tyres. Do you want to know more about RUSC ? [Click here !](#)

Main Features



Car
Suitable for car wheels



Superautomatic
Model with four control pedals, tilting tower, sliding horizontal arm and operating arm with automatic lowering and locking by pushing button.



10"-28"
Allows to operate with tyre assemblies from 10" to 28".



Racing
Tyre changer with reinforced chassis.



Jaw Clamping
Rim clamping is performed by means of 4 jaws facing each other, driven by pneumatic cylinders connected to the control pedal.



Wheel clamping with adjustable jaws
Allows to increase the clamping range of the turntable plate up to a maximum of 4", by sliding jaws without jeopardizing product reliability and durability.



Blade Bead Breaking
Bead breaking by conventional blade, works with tyre assembly in vertical position



Power Out
Patented GIULIANO device to prevent bead breaker blade from getting stuck between rim and tyre bead during bead breaking operation.



Two speed chuck
Two speed hydraulic chuck, allows to adjust rotation speed in accordance with the type of operation to perform, ensures work efficiency and safety.



Description

Racing super-automatic tilt back tyre fitting machine for tyres with rim from 10" to 28" (max. tyre diameter 1100 mm./43", max. tyre width 415mm./16"). Suggested for high volume tyre shops.

Functions

- Tilting tower, sliding horizontal arm with \varnothing 41 mm operating arm;
- Bead breaker double effect Cylinder \varnothing 200 mm;
- Reinforced Chassy and tower;
- Tabletop thickness 14 mm w/adjust. jaws;
- Fitting head designed for both standard and low profiled tyre applications;
- Double rotation speed by pedal;
- Tyre inflation by pedal (standard);
- Adjustable bead breaker shovel angle;
- Suitable for Help, Press Arm or HP2 assist arms (optional);
- Suitable for Tubeless tyre bead seating system; (optional);
- "Easy Access" extractable pedal box for quick service;
- PO System, Giuliano patent, for granting no BB shovel stuck into the rim;
- Robotic pipe for operating arm positioning/lock.

Standard Features

| | |
|---------------------------------------|--|
| Rim clamping range from outside | 10" - 26" By adjustable jaws |
| Rim clamping range from inside | 12" - 28" By adjustable jaws |
| Max. tyre diameter | 1100 mm (43") |
| Max. tyre width | 415 mm (16") |
| Bead breaker cylinder force at 10 Bar | 30800 N |
| Operating pressure | 10 bar (145 Psi) |
| Power supply | 400V - 3ph / 2 speed 220V - 1ph 220V - 1ph / 2 speed |
| Motor power | 0,8/1,1 kW (3ph) |
| Rotating speed | 7-14 rpm |
| Pre-set tyre inflating pressure | 3,5 bar (50 Psi) |
| Net weight | 270 Kg |
| Max overall dimensions | 1170 x 1890 x 2040 mm |



Standard accessories



PED-G (9236373)
Pedal operated inflating device.



AWF (9213425)
Air filter with pressure regulator and CE manometer.



G-CLAMP (9217471)
G-CLAMP Set. Helps adding extra bead-pressure points on top bead while assembling it. Kit includes 2 regular and 2 extra-size G-clamps.



RJP (9236282)
Kit of rubber coated jaw protectors.



T1 (9217472)
Kit of 4 rubber protections for steel rims.



T2 (9217473)
Kit of 4 rubber protections for aluminium rims.



T3 (9217474)
Kit of 4 rubber protectors for aluminium rims with arched spokes.



LB (9216805)
Lube paste bucket, 1 kg.



GUN 1 (9236658)
Tubeless inflation external kit.



QRJP (9216166)
Kit of rubber protections for clamping rims from inside using conventional jaws.



MOTO-AD (9235081)
Kit of 4 motorcycle wheels clamping adaptors, 6" - 24", with screw lock.



ATV-AD (9235082)
Kit of 4 clamping adaptors for HARLEY DAVIDSON wheels, oversize height, 6" - 24", with screw lock.



QCK (9208996)
Quick release kit for mounting tools (includes one plastic tool and one hub for connecting the tool delivered with the tyre-changer).



SHS (9209086)
Mounting/demounting tool for soft tyres on steel wheels, including hub for connection to quick release kit (QCK).



AHS (9213611)
Mounting/demounting tool for arched spokes rims, including hub for connection to quick release kit (QCK).



EHS (9235009)
Mounting/demounting tool for iron wheels with projecting central hub, including hub for connection to quick release kit (QCK).



GHS (9212850)
Mounting tool for 6"-12" wheels with operating arm extension.



QXHS (9230814)
Kit of QX adaptors for connection to quick release kit (QCK).



QX-AD (9232767)
QX and QX Plus adjusting tool.



TPP 3 (9234453)
Kit of 10 front plastic protections, for QX and QX Plus.



TPP 4 (9234452)
Kit of 10 rear plastic protections, for QX and QX Plus.



HD (9208633)
Manual bead depressor.



PAD (9237711)
Manual bead depressor with extendable travelling pad.



QCB (9218518)
Quick release kit for motorcycle tyre bead breaker blade.



HELP (9236416)
HELP4 additional arm to ease mounting operations of low profiled and UHP tyres.



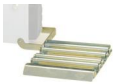
PA (9215940)
PRESS ARM3 additional arm to ease mounting operations of low profiled and UHP tyres.



HP2 (9219399)
HP2 additional double arm to ease mounting operations of low profiled and UHP tyres.



CPC (9214251)
Pressing cone for clamping RUN FLAT tires from outside.



ROLL (9241924)
Fixed roller plate, to ease bead breaking of heavy wheels.



WL 6 (9242824)
Pneumatic wheel lifter



Scan QR code to go to product web page



Giuliano Automotive Equipment (Suzhou) CO.,Ltd

NO 8 Jinsheng Road

SIP Suzhou (Jiangsu)

P.R.China

+86 0512 69368611

+86 0512 69367919

<https://www.giuliano.cn>

